

● Part Number Guide

T-V-S-FF.FFFM-FS -OT -OP-TU-S

T(Type 型号): Q=FULL SIZE (8PIN) VCTCXO

V(Input Voltage 输入电压): 3.3=3.3V 5=5.0V, etc

S(Symmetry 占空比): 5=45/55max 6=40/60 max

F(Frequency 标称频率)

FS(Frequency Stability 频率稳定性): 50=±50ppm, etc

OT(Operating Temperature 工作温度):0070=10°C to +70°C 3080=-30°C to +80°C, etc

OP(Out put 输出):1=15PF HCMOS 2=10TTL 3=30PF 4=50PF 5=10TTL/15PF

TU(Tube 摆管)

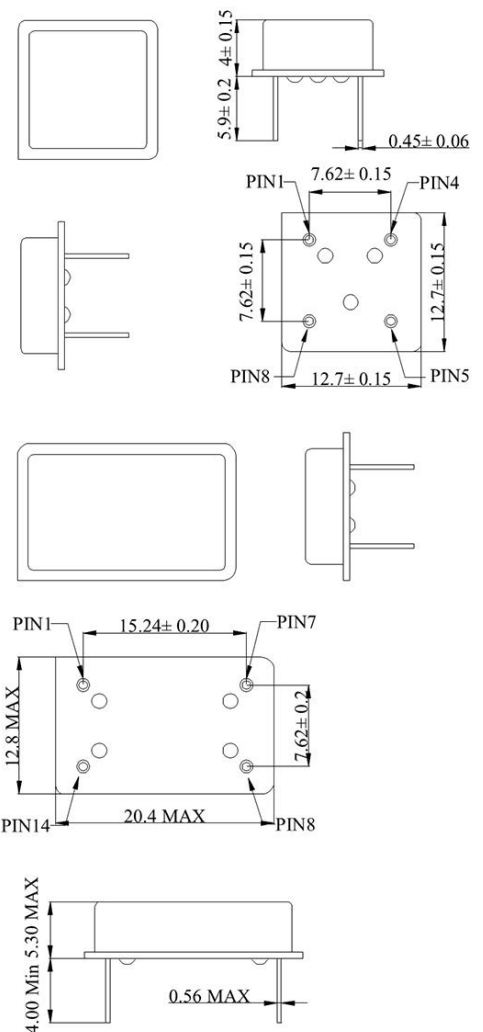
S(Special Requirement 特殊要求)



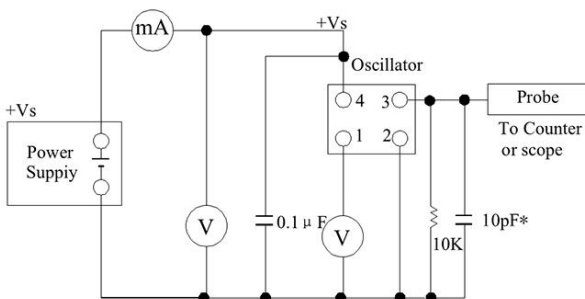
● Electrical Specifications 电气参数

型号	Holder Type	HALF SIZE VCTCXO
频率范围	Frequency Range	10.000MHz to 700.000MHz
频率偏差	Initial Frequency Tolerance @25°C	±1.5ppm
频率稳定度	Frequency Stability	±2.0ppm
老化率	Aging 10 Year	±2.0ppm
输入电压	Input Voltage	5.0±10% V
输入电流	Input Current	70mA Max
占空比	Symmetry (Duty Cycle)	40 - 60
上升时间	Rise Time	9max nS
下降时间	Fall Time	8max nS
高电平	Logic "1" Level	4.5Min V
低电平	Logic "0" Level	0.5Max V
开始时间	Output Type	20Max ms V
控制电压	Control Voltage	0.5 - 4.5 V
相位噪声	Phase Noise (Typical) dBc/Hz	<u>10Hz 100Hz 1KHz 10KHz 100KHz</u> -80 -110 -130 -140 -145

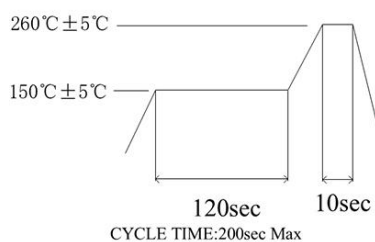
• Mechanical Dimensions 外型尺寸 UNIT(单位) : mm (毫米)



• Test Circuit(测试电路)



• Reflow Condition 回流焊条件



Pin Connection

PIN	FUNCTION
1	N/C Tri-state
2	Ground
3	Output
4	Vdd

